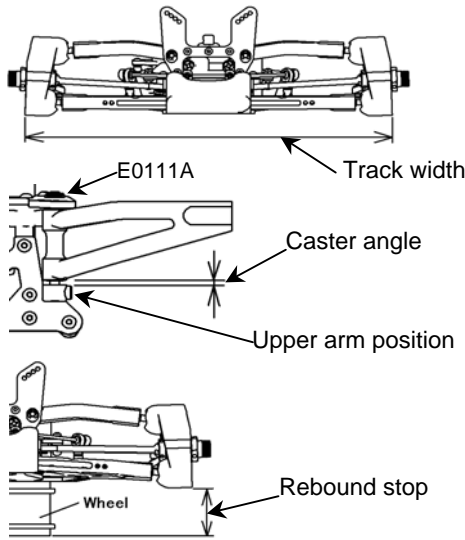


Name: Kris Moore
Date: March 27 05
Track: Silver State Las Vegas

Track Conditions

Size: Open Med. Tight
 Traction: High Med. Low
 Surface: Smooth Med. Bumpy

Front Suspension

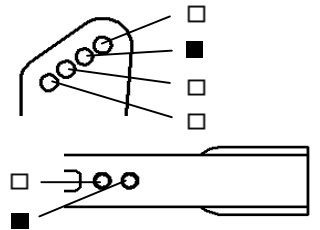


Track width 276 mm
 Camber angle -2 °
 Caster angle 3 mm
 Toe angle 1 Out °
 Rebound stop 0 mm
 Anti-roll bar Use 2.3 mm
 None
 Lower arm position E0105A (-1°)
 E0105B (-2°)
 E0105C (-3°)
 Upper arm position (E0111A)

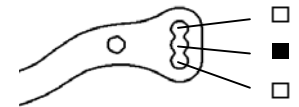
 E0106A - E0106B (High)
 E0106C - E0106D (Low)

Front Shocks

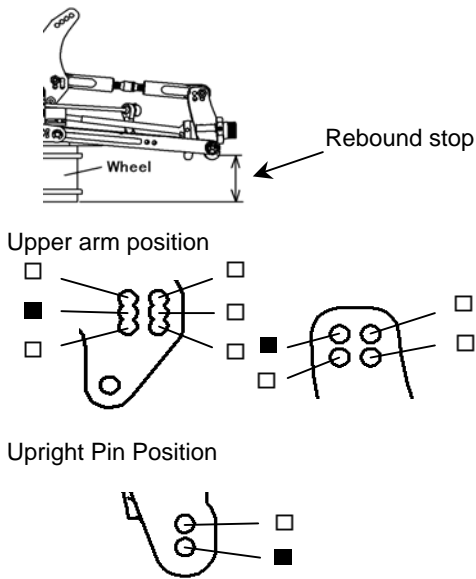
Piston 1.5
 Oil # 400
 Spring Gray
 Spacer 6 mm
 Shock position



Steering Ackerman



Rear Suspension

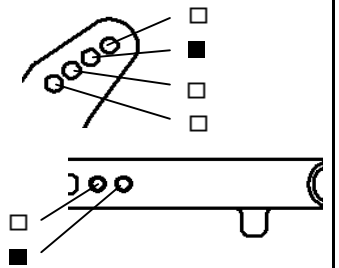


Camber angle -2.5 °
 Toe angle E0105D (2°)
 E0105E (2.5°)
 E0105F (3°)
 Rebound stop 17 mm
 Anti-roll bar Use 2.8 mm
 None
 Caster angle (E0111C, E0111D)

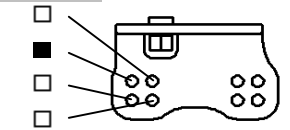
 Wheelbase adjustment 2 mm
 Front

Rear Shocks

Piston 1.5
 Oil # 350
 Spring Gray
 Spacer 7 mm
 Shock position



Wing Position



Engine

Type OS V Spec
 Gasket mm Muffler OS 2050
 Plug P 3 Fuel Mugen 30%

Diff. Oil

Front # 5000 O-Ring 0 pcs. Other
 Center # 7000 0 pcs. Other
 Rear # 1000 0 pcs. Other

Tire

Front Type Proline Crimefighter **Rear** Type Proline Crimefighter
 Foam Stock Foam Stock

Clutch

Clutch shoes Aluminium Other
 Spring 1.0 mm
 Clutch bell / Spur gear 13T /46

Result

Race time / Lap
 Best lap (1Lap)

Comments:

.....

